



Hardware Installation Guide

LEMOPANEL32/SMAPANEL32 INSTALLATION GUIDE

Any specifications, drawings or reprints or data furnished to bidder or seller shall remain D-TACQ Solutions Ltd property, shall be kept confidential, shall be used for the purposes of complying with D-TACQ Solutions' requests for quotation or with D-TACQ solutions purchase orders and shall be returned at D-TACQ Solutions request. Patent rights embodied in designs, tools, patterns, drawings, devices, information and equipment supplied by D-TACQ solutions pursuant to this request for quotation or purchase order and exclusive rights for use in reproduction thereof are reserved by D-TACQ Solutions Ltd unless otherwise agreed on purchase order.

1 Product Description

LEMOPANEL, SMAPANEL : four variations on the same basic product.

NAME	Description	Compatibility
LEMOPANEL32	Panel with 32 LEMO connectors	ACQ196CPCI, ACQ164CPCI
SMAPANEL32	Panel with 32 floating SMA connectors	
LEMOPANEL32-S2	Panel with 32 LEMO connectors	ACQ132CPCI, ACQ216CPCI-M7
SMAPANEL32-S2	Panel with 32 floating SMA connectors	

1.1 Common Features

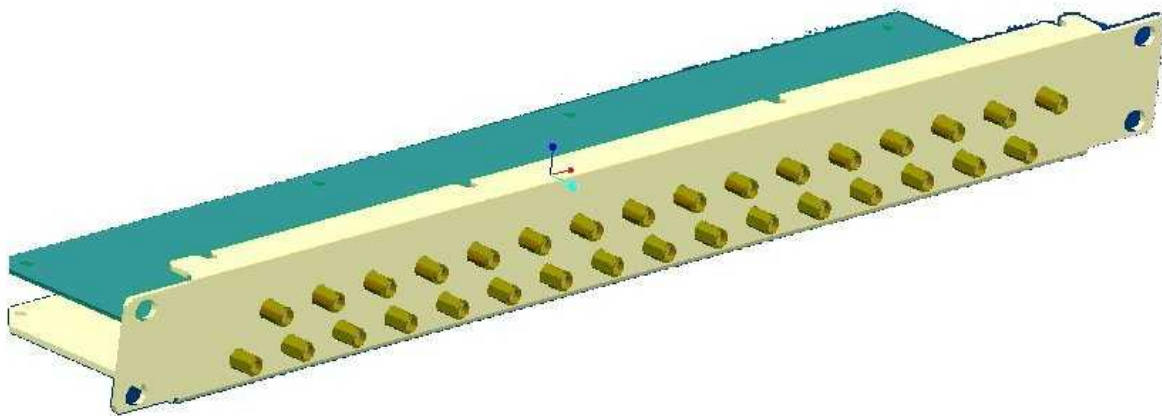
- 19", 1U painted steel panel with integral PCB
- Wired for differential inputs to D-TACQ HD68 (SCSI-3) standard
- Includes Transil transient over-voltage protection
- User options for shield grounding.

1.2 Differences S2

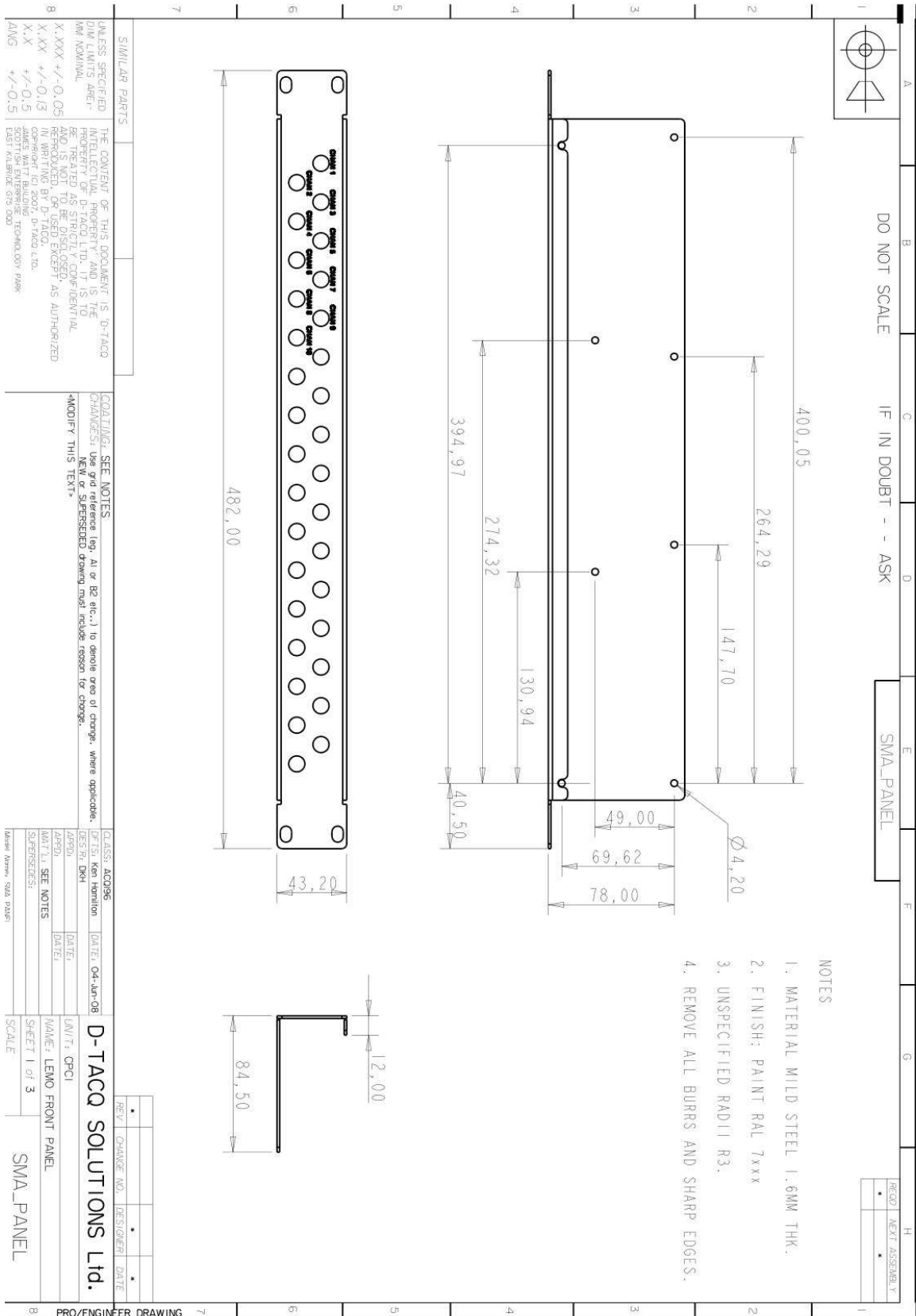
- LEMOPANEL32, SMAPANEL32 : single HD68 socket for connection by single cable to one 32-channel port on digitizer.
- LEMOPANEL32-S2, SMAPANEL32-S2 : two HD68 sockets for connection by dual cables to two 16-channels ports on digitizer.

The four products are factory build options. It's also possible to build a "universal" unit with three HD68 sockets fitted, this will work with both ACQ132CPCI and ACQ196CPCI.

1.3 Product Concept:



2 Physical



3 Pinouts

S1: IN01-32		S2: OUT01-16		S3: OUT17-32	
Pin	Signal	Pin	Signal	Pin	Signal
3	AI1+	3	nc	17	nc
4	AI2+	5	nc	18	nc
5	AI3+	7	nc	19	nc
6	AI4+	9	nc	20	nc
7	AI5+	11	nc	21	nc
8	AI6+	13	nc	22	nc
9	AI7+	15	nc	23	nc
10	AI8+	17	nc	24	nc
11	AI9+	19	nc	25	nc
12	AI10+	21	nc	26	nc
13	AI11+	23	nc	27	nc
14	AI12+	25	nc	28	nc
15	AI13+	27	nc	29	nc
16	AI14+	29	nc	30	nc
17	AI15+	31	nc	31	nc
18	AI16+	33	nc	32	nc
19	AI17+	nc	3	33	nc
20	AI18+	nc	5		
21	AI19+	nc	7		
22	AI20+	nc	9		
23	AI21+	nc	11		
24	AI22+	nc	13		
25	AI23+	nc	15		
26	AI24+	nc	17		
27	AI25+	nc	19		
28	AI26+	nc	21		
29	AI27+	nc	23		
30	AI28+	nc	25		
31	AI29+	nc	27		
32	AI30+	nc	29		
33	AI31+	nc	31		
34	AI32+	nc	33		

S1: IN01-32		S2: OUT 01-16	S3: OUT 17-32
Pin	Signal	Pin	Pin
37	AI1-	37	nc
38	AI2-	39	nc
39	AI3-	41	nc
40	AI4-	43	nc
41	AI5-	45	nc
42	AI6-	47	nc
43	AI7-	49	nc
44	AI8-	51	nc
45	AI9-	53	nc
46	AI10-	55	nc
47	AI11-	57	nc
48	AI12-	59	nc
49	AI13-	61	nc
50	AI14-	63	nc
51	AI15-	65	nc
52	AI16-	67	nc
53	AI17-	nc	37
54	AI18-	nc	39
55	AI19-	nc	41
56	AI20-	nc	43
57	AI21-	nc	45
58	AI22-	nc	47
59	AI23-	nc	49
60	AI24-	nc	51
61	AI25-	nc	53
62	AI26-	nc	55
63	AI27-	nc	57
64	AI28-	nc	59
65	AI29-	nc	61
66	AI30-	nc	63
67	AI31-	nc	65
68	AI32-	nc	67

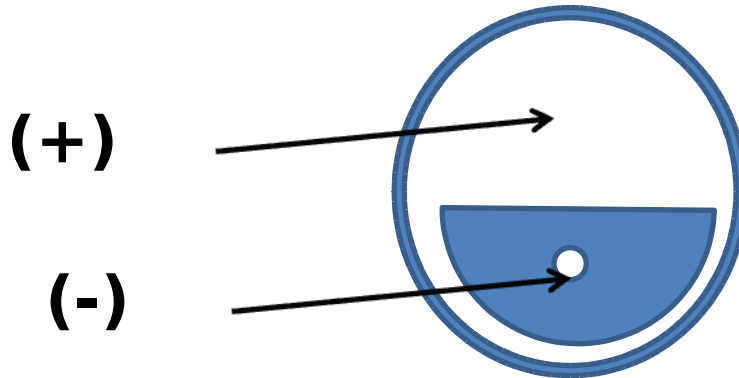
4 LEMO CONNECTOR.

4.1 LEMO part numbers

- Connector on panel: EPL.OS.302.HLN
- Cable part: any 302 series cable connector. eg FFA.OS.302.CLxx

4.2 Polarity: view of connector on panel:

View looking into the connector from the front.



5 Options

S2

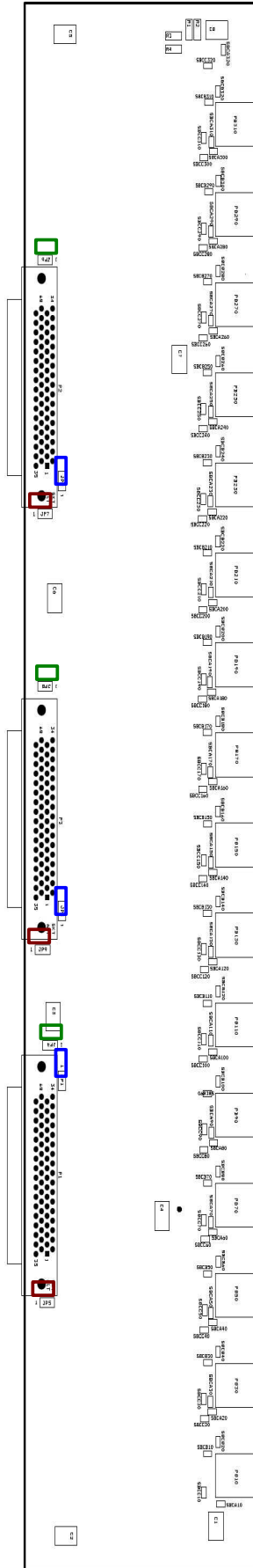
Connector
Channels 1-16
For ACQ132CPCI
Build


S1


Connector
Channels 1-32
For ACQ192CPCI
Build


S3

Connector
Channels 17-32
For ACQ132CPCI
Build

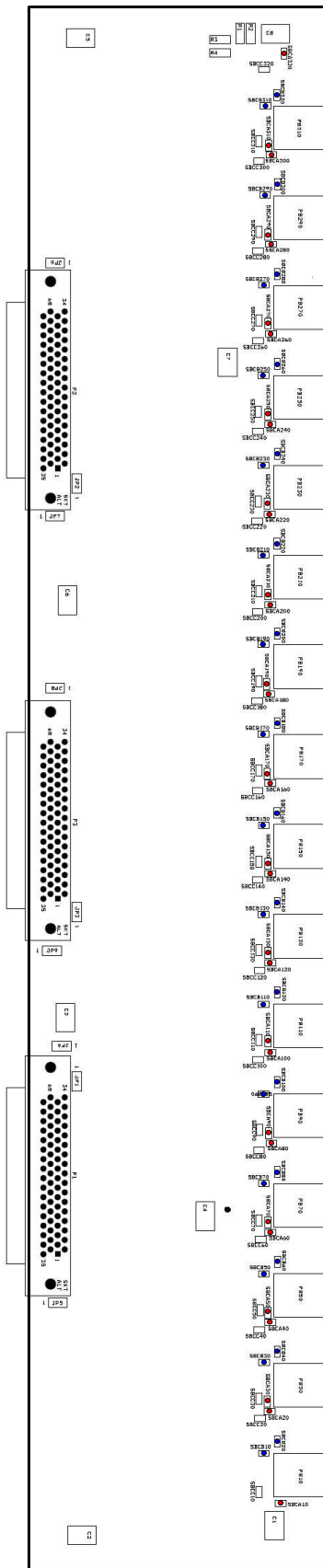


 Jumpers 1,2,3
Connect Analog Gnd on
SCSI Connector to
Local Analog Gnd – Recommended

 Jumpers 4,6,8
Connect the Shell of the SCSI
Connector to
Local Analog Gnd

 Jumpers 5,7,9
Connect the Shell of the
SCSI Connector to
Local Chassis

Jumpers 4,6,8 and Jumpers 5,7,9
should not normally be fitted
at the same time



● 0603 0R Connection to Chassis - Default
● 0603 0R Connection to Analog Gnd